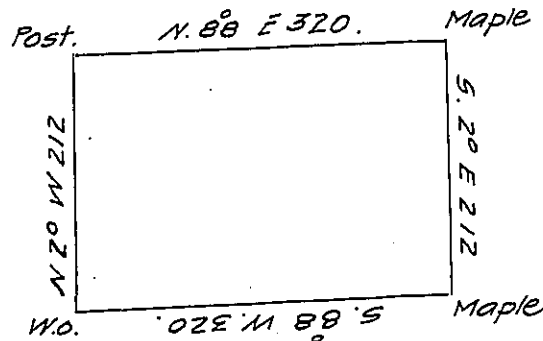


Charles Young.

Casper Wister



Lewis Weiss Esq

Robert Irwin

The above is a draught of a survey made the 01st of June 1796
 in pursuance of a warrant granted Elijah Weed on the 14th of Aprile
 1792. Situate on the waters of Big Beaver Creek in Allegobl County
 containing four hundred acres and allowance six per Centum
 called Abby.

Thomas Stokely D.S.

Daniel Brodhead Esqr.

Surveyor General of Penna.

IN TESTIMONY that the above is a copy of the original remaining on file in
 the Department of Internal Affairs of Pennsylvania, made
 conformably to an Act of Assembly approved the 16th day of
 February, 1833, I have hereunto set my Hand and caused
 the Seal of said Department to be affixed at Harrisburg,
 this first day of August 1907

Henry Howard
 Secretary of Internal Affairs.